

High Plains Regional Climate Center

727 Hardin Hall, 3310 Holdrege Street, Lincoln, NE 68583-0997

<http://www.hprcc.unl.edu> | (402) 472-6706 | fax: (402) 472-8763

Let's Build a Rain Gauge!

Materials Needed:

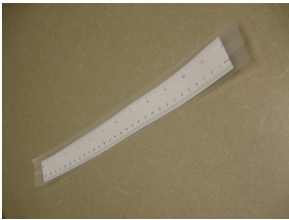
- Plastic ruler
- Straight-sided glass container
- Scissors
- Tape
- Rainy day!



Procedure:

1) Stand the ruler inside the glass container so that the ruler rests on the bottom of the container. You might want to cut the ruler in half so it can fit in your jar.

An alternative to using an actual ruler would be to draw one on a piece of paper, covering it with laminating paper or tape to make it waterproof. Make sure you cover both sides of the piece of paper.



2) Tape the ruler to the inside of the jar and trim off any excess ruler from the top.



3) Your rain gauge is now ready to use!



Tip: Be sure to place your rain gauge in an open area, away from water that could drip from a roof or from trees.

Measure the amount of rain in the gauge after every day, or every rainstorm, and keep track in a weather journal. Be sure to empty the rain gauge after each measurement.



Good location!



Good location!



Bad location!

Do you like recording rain measurements? If so, you might be interested in becoming a volunteer observer for CoCoRaHS (Community Collaborative Rain, Hail & Snow Network).

For more details, see: <http://www.cocorahs.org/>